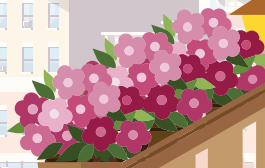


JERSEY CITY'S PARKLET PROGRAM

Parklets are mini-parks built as an extension of the sidewalk to create more public space.



Infographic shows counts that were taken during a 3 day span between 8 AM and 8 PM on the Parklet at 376 Central Avenue and the adjacent metered parking space.

AVERAGE PER HOUR OF PEDESTRIANS USING PARKLET

VS.

VEHICLES USING METERED PARKING SPOT



Pedestrians per hour **7.5**



1.8 Cars per hour



Pedestrians per hour **8.7**



3 Cars per hour



Pedestrians per hour **6.4**



3 Cars per hour



TOTAL PEDESTRIANS

VS.

VEHICLES



Pedestrians **90**



22 Cars



Pedestrians **104**



36 Cars



Pedestrians **77**



36 Cars



For more information or to provide feedback,
visit www.jerseycitynj.gov/parklets